

INDIANA UNIVERSITY
SCHOOL OF DENTISTRY



FOR ALL

The Indiana University Bicentennial Campaign

FOR ALL WHO CREATE A HEALTHIER WORLD

Oral health goes beyond a bright smile—the health of the mouth mirrors the condition of the body as a whole. It’s a window into human strength and vitality. And by delivering excellent oral care, we can help build more vibrant lives for all.

To do so, we must open doors for the next generation of oral health professionals who will advance our field. We must give them the tools they need to effect positive change in their local communities and around the world. We must develop innovative solutions that will improve our health today to address tomorrow’s challenges. We must answer that call.

And we will. At the IU School of Dentistry, we’ve been meeting these needs for more than a century: through our students, who receive the most comprehensive training available; through our exceptional faculty and their groundbreaking research; and through the community service we provide in Indiana and across the globe.

With your support, we can expand our already substantial impact as part of *For All: The Indiana University Bicentennial Campaign*. Together, we can generate the critical private support necessary to maintain and build on our strong foundation of success.



FOR ALL WHO ELEVATE ORAL HEALTH

GOAL: SUPPORT STUDENT SUCCESS

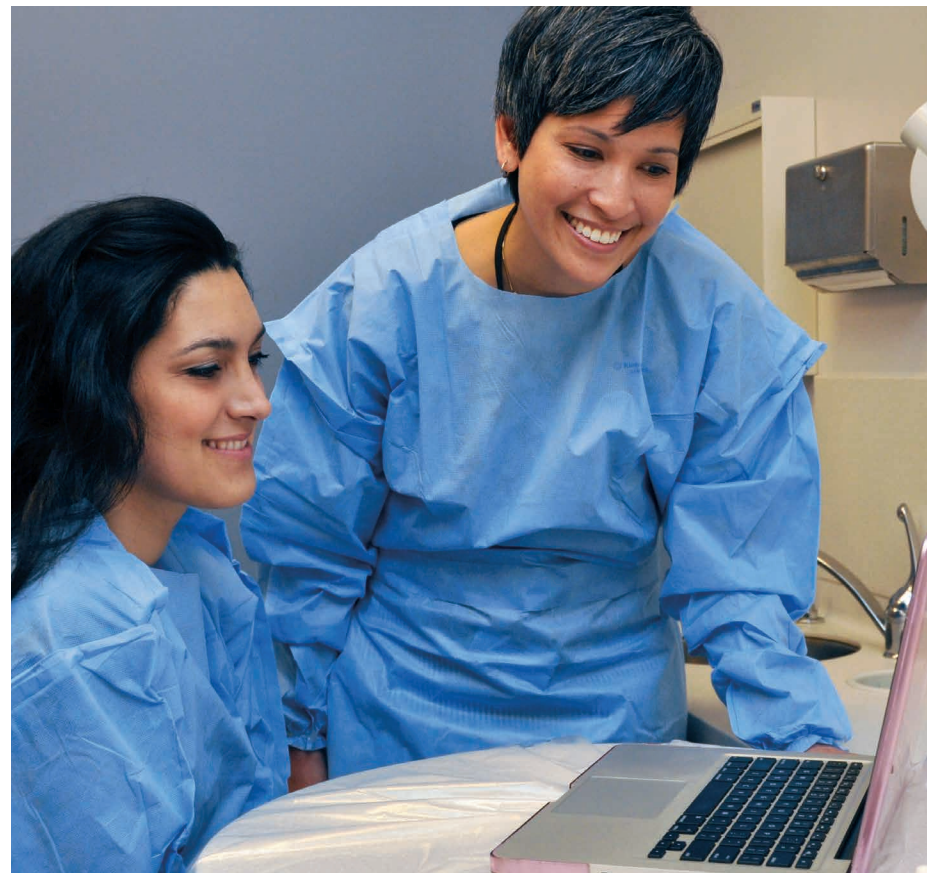
Now more than ever, the world needs access to excellent oral health care. As that need continues to grow, so too must a flourishing field of visionary dental professionals.

With every new class of students, the IU School of Dentistry (IUSD) equips tomorrow's professionals to provide superior oral health care for individuals, families, and communities around the world.

But competition for the best students is a reality we all must face. Today, scores of qualified candidates miss out on an IUSD education simply because

they can't afford to attend. Those who do enter the dentistry program are often burdened with \$200,000 or more in student debt upon departure.

Merit-based financial assistance is one of the most powerful tools we have to attract and sustain the brightest students. With your support, we can grant them access to a world-class education, give them the chance to focus on their studies, and help them graduate with less debt, opening up more possibilities for a positive future where they can be of maximum service to their communities.



WHERE IT HAPPENS

Superior facilities with leading-edge laboratories, state-of-the-art technology, and collaborative learning spaces will develop sought-after professional skills and experiences that empower our graduates to lead in their oral health disciplines.

IT STARTS WITH YOU

Undergraduate scholarships build a diverse, talented community and help equip students to become tomorrow's leading dental professionals.

Graduate fellowships and assistantships attract the best and brightest scholars to IUSD, where they enhance innovative thinking, assist faculty in teaching and research, and participate in the discovery of new knowledge.

GOAL: STATE-OF-THE-ART FACILITIES

We've long offered an extraordinary learning environment in which teaching, research, and community service come together in the best way possible. But clinical education and research have evolved, and our current facilities are taxed with meeting the needs of our faculty and students.

After decades of identifying the need for new clinical space, in August 2015 the IU Board of Trustees approved a 45,000-square-foot, \$21.6 million addition for a 21st-century clinical teaching space.

We invite you to join us in creating a space that will support the clinical work and research of current and prospective dental professionals—preserving our legacy as a premier learning institution and improving the oral health of our world.

**YOUR SUPPORT OF
THE SCHOOL OF DENTISTRY**



SUCH AS
classrooms, dry and
wet labs, computer labs,
and dental clinics

WHERE LEADING
CLINICAL EXPERTISE
AND RESEARCH
ARE FUELED

WHERE THE
BRIGHTEST LEARNERS

ARE EQUIPPED



Discoveries

Clinical Care

Advancements

**CHANGING THE
ORAL HEALTH
OF THE WORLD
FOR THE BETTER**



FOR ALL WHO INSPIRE FUTURE CAREGIVERS

Our professors are in the ideal position—not only to shape the education of future dental professionals, but also to positively impact the profession as a whole with their industry-leading research.

GOAL: CREATE ENDOWED PROFESSORSHIPS

Faculty endowments, as well as research support and infrastructure, serve as our best tools to draw in premier dental faculty who build the foundation for

contemporary dental science, and continue to generate the data and solutions that advance our field.

The Oral Health Research Institute gives faculty members the opportunity to pursue deep study into the world's oral health standards. It also gives students the chance to gain first-hand experience working alongside faculty mentors. Additionally, it drives wide-ranging research activities that draw substantial external funding, strengthen our reputation for research excellence, and allow the School of Dentistry to make real, lasting contributions to society.

GOAL: EXPAND EXCELLENCE IN RESEARCH

Assistant Professor Marco C. Bottino is the director of applied biomaterials and regenerative dentistry. His interdisciplinary research efforts encompass the areas of materials science, biology, dentistry, and medicine, with the goal of meeting the needs of an aging global population—which is predicted to create a considerable increase in the need for oral rehabilitation, as well as periodontal and pulp tissue regeneration.

His work has advanced surgical and restorative procedures worldwide, and students who assist on his research team will go on to apply their gained knowledge in their own careers. Bottino is just one of our many faculty members who embody the high standard of excellence for which the School of Dentistry is known.

It's up to us to support our exceptional faculty—keeping a strong research agenda alive, building on our legacy, and attracting external grant funding. With your support, we can ensure that these life-changing studies continue and our program remains competitive.



“Oral health care is always evolving. Research allows us to continue to seek answers that make us grow and evolve as a profession. When you’re the one actually doing the research, it broadens your understanding of why and how we practice the way we do.”

—Laura Albrecht

Dental student and research fellow

→ IT STARTS
WITH YOU ←

Research support is a critical tool for building and sustaining the work of a superior faculty, which fosters a community of innovation and continues to enhance our reputation.

Endowed faculty positions are IUSD's best opportunity to meet that challenge head on.

FOR ALL WHOSE CARE EXTENDS BEYOND BORDERS



GOAL: SUPPORT GLOBAL ORAL HEALTH

Like all human health challenges, oral health needs to transcend national boundaries. It is the clinical dentistry professional who possesses intercultural understanding, sensitivity, and competency that will lead us into the future and confront challenges in an intelligent, informed manner.

International service learning is a critical avenue for helping our aspiring dentists to develop their empathy and compassion as they treat patients across cultures. However, sustaining these programs demands significant investment from IUSD and from participating students. And to continue to offer these opportunities, especially to those who cannot afford them, we need your help.

Your support of international service programs will allow more IUSD students to broaden their skills and to gain the intercultural perspectives necessary to elevate human health globally.

“This trip definitely changed me as a dental professional. Going forward, I would like to spend more time treating the underserved. Everyone deserves to live a healthy life and for many people, even here in Indianapolis, this is not a reality. I hope to help change that.”

—Tasha Dhir
Dental student

→ IT STARTS
WITH YOU ←

International service experiences open our students' eyes to new cultures, new ideas, and new opportunities for collaboration as they gain clinical experience around the globe.





FOR ALL WHO CREATE VIBRANT COMMUNITIES

“When you don’t have teeth and people look at you, their eyes are automatically drawn to your mouth. I couldn’t afford teeth and felt terrible about my appearance. Because of the dentures my student dental provider made for me, I feel so much better about myself. I have so much more self-confidence.”

—Michelle
Student Outreach Clinic patient

GOAL: BUILD A HEALTHIER STATE, NATION, AND WORLD

The IUSD Student Outreach Clinic, founded by dental students in 2009, provides complementary services to countless low-income Hoosiers. Hundreds of students have volunteered, and the clinic has been honored by the governor of Indiana (2013) and the American Dental Association (2014). This clinic allows our students to take the knowledge and skills they’ve gained in classrooms and laboratories and apply them to meet real-world needs in our own backyard.

The Student Outreach Clinic is just one of many IUSD programs that serve our communities. Staffing, administering, and sustaining these clinical programs, however, requires additional funding from the school—beyond what is already committed to our teaching and research agendas. Your partnership in these programs will enable even more students to benefit from first-hand learning opportunities, and even more people will benefit from vital outreach and dental care.

We must neither overlook, nor can we neglect, the oral health needs in our own neighborhoods. To build more vibrant Indiana communities, we must foster clinical outreach. That’s why we’re committed to supporting and expanding programs that give our students direct, hands-on experience in dentistry while caring for our local veterans, families, children, and the underserved—right here, in Indianapolis.



→ **IT STARTS
WITH YOU** ←

Clinical outreach programs allow our students to apply and refine their skills in real-world settings, equipping tomorrow’s dentistry professionals with the practical experiences they need to create healthier communities.

FOR ALL WHO WILL CARE FOR US IN THE NEXT CENTURY

There has never been a more crucial time to address oral health, or a more critical need for the best and brightest dental professionals. With your help, we have the power to advance dentistry and build healthier communities. We can train the professionals who will generate new solutions, expand access to care, and elevate human health around the world.

Your investment in the IU School of Dentistry will open doors to the brightest students and give them state-of-the-art facilities. It will foster global outreach, expand community dentistry, and fuel groundbreaking research. It will care for families, build thriving populations, and advance oral health worldwide.

Together, we can fulfill the promise of a healthier Indiana and a brighter future for all.



FULFILLING *the* **PROMISE**

INDIANA UNIVERSITY SCHOOL OF DENTISTRY
1121 WEST MICHIGAN STREET, INDIANAPOLIS, INDIANA 46202 | 317-274-7957

FORALL.IU.EDU